



# 废纸压缩打包机系列

*Waste Paper (Compressing) Baler Machine*

2025



关于我们 ▶  
About Us

# ARON IT IS

1995年 - 公司在上海成立, 专注环保及包装设备开发、生产和销售, 拥有Jewel和CSJ品牌。

In 1995 - Jewel was established in Shanghai, specializing in the development, production, and sales of eco-friendly packaging equipment, owning trademarks JEWEL and CSJ.

2004年 - 江苏工厂建设开始, 2006年竣工并验收。

In 2004 - Construction of the Jiangsu factory began, completed and inspected in 2006.

2006年 - 获得多项设计专利, 产品性能卓越。  
2007年 - 扩建生产规模, 获“产学研示范单位”奖。

In 2006 - Obtained multiple design patents and achieved excellent product performance.  
In 2007 - Expanded production scale and won the "Model of Enterprises, Universities, and Institutions Award".

2012年 - 获得TUV及SGS认证。  
2015年 - 投资建立第二工厂, 面积超过30,000平方米。  
2016年 - 成立智能压缩设备技术研究中心。

In 2012 - Obtained TUV and SGS Certificates.  
In 2015 - Invested in the construction of the second factory, covering an area of over 30,000 square meters.  
In 2016 - Established an Intelligent Compression Equipment Technology Research Center.

## 2012/2015/2016

## 2006/2007

## 2008/2009

2008年 - 获ISO9001:2015质量管理体系认证。  
2009年 - 产品通过欧盟CE安全认证。

In 2008 - Obtained ISO9001:2015 Quality Management System certification.  
In 2009 - Products obtained the CE Safety Certificate from the EU.

## 1995

## 2004

2019年 - 产品销往全球120多个国家，服务2000多家企业，提供优质解决方案。  
2021年 - 获“专精特新小巨人”称号，液压打包机系列产品被认定为“中国绿色节能环保产品”。

In 2019 - Products sold to over 120 countries and regions, serving more than 2,000 companies with high-quality solutions.

In 2021 - Awarded the "Little Giant of Specialization, Refinement, Peculiarity, and Novelty" title. The Hydraulic Baler series was recognized as "China's Energy-Saving and Environmental Product".

## 2019/2021

## 2022/2023

## 2024

## 2025

2025年 - 南通佳宝三期厂房暨佳晟源智能化生产线项目盛大开工！  
荣获省级“专精特新小巨人”称号

2025 - Nantong Jiabao Phase III plant and Jiashengyuan intelligent production line project grand start!  
Won the provincial "specialized special new little giant" title

2024年 - 全面进行数字化转型升级，开启新的未来征程。

2024 - Complete digital transformation and upgrading to open a new journey for the future.

2022年 - 获“江苏省服务型示范制造企业”称号。

2023年 - 获16项发明专利，12项实用新型专利，拥有优秀的团队，提升产品质量。

In 2022 - Awarded the title "Service-Oriented Model Manufacturer" of Jiangsu Province.

In 2023 - Obtained 16 invention patents and 12 new utility patents, with an excellent team that continues to improve product quality.

## 2017/2018

2017年 - 获高新技术企业和产品认证。  
2018年 - 获12项发明专利，52项实用新型专利，3项外观设计专利；新型破碎机和全自动高速套袋机获好评。

In 2017 - Obtained High-Tech Enterprise and Product Certification.

In 2018 - Obtained 12 invention patents, 52 utility model patents, and 3 design patents; the new crusher and automatic high-speed bagging machine received high praise.



关于我们/About Us



扫码观看视频  
Scan here to watch the video

# 01

## 卧式全自动压缩打包机 Horizontal Full-Automatic Compression Baler

卧式自动化机型，无人化操作，各种压力大小选择。广泛应用于包装厂、纸箱厂、印刷厂、垃圾分类处理站、专业回收站等场所；适用废纸、纸板、塑料、布料、纤维、生活垃圾等材料，可配套流水线、风管送料等方式使用。

Horizontal Full-Automatic Compression Baler straps with iron wire automatically. With different pressure power options, it is widely used in packaging factory, carton factory, printing factory, garbage sorting and processing station and professional recycling station and other industries. The series is suitable for waste paper, cardboard, plastic, fabric, fiber and household garbage. It can be connected with conveyor line or air pipe to feed materials.



# 卧式全自动压缩打包机

## Horizontal Full-automatic Baling Machine

性能特点：采用三面收口反拉式，通过油缸自动收紧与放松，稳定有力。PLC程序加触摸屏控制，操作简单，自带加料检测，自动压缩，实现无人化作业。独特的自动捆包装置，速度快，结构简单，动作稳定，故障率低且易于清洁保养。

配有加速油泵和增压油泵，省电，省能耗，节省成本。

故障自动诊断，自动显示，提高检测效率，可自由设定包块长度，准确记录打包数值。

独特的凹式多点切刀设计，提高了切断效率，延长切刀的使用寿命。

三相电压，安全联锁，简单耐用。可配风管或输送线上料，效率更高。

Horizontal Full-Automatic Compression Baler uses three-sided shrinking mouth, tightening and loosening by cylinder, and it keeps the whole equipment stable and powerful. Touch screen control with PLC program makes the operation simple. Being equipped with automatic feeding detection and automatic pressing realize unmanned operation.

The unique automatic strapping device with simple structure works fast and stably. It has low failure rate and is easy to maintain.

It is equipped with acceleration oil pump and booster oil pump to save electricity, energy consumption and cost.

Automatically inspecting failure and information display improves the efficiency of detection. Bale length can be set and bale numbers can be recorded accurately.

The unique concave multi-point cutter design improves cutting efficiency and prolongs the service life of the cutter. Three-phase voltage and safety interlock make it simple and durable. Also it can be equipped with conveyor line or air pipe to reach higher efficiency.

# 卧式全自动压缩打包机

*Horizontal Full-automatic Baling Machine*



# 卧式全自动压缩打包机

## Horizontal Full-automatic Baling Machine

型号 Model	压缩力 Hydraulic Power (Ton)	包块尺寸 Bale Size (W*H*L) mm	加料口尺寸 Feed Opening Size (L*W) mm	打包密度 Bale Density (kg/m <sup>3</sup> )	捆包道数 Bale Lines	打包能力 Output (Ton/hr)	功率/马力 Power (KW/HP)	机器尺寸 Machine Size (L*W*H) mm	机器重量 Machine Weight (Ton)
JPW30QT	30	500*500*(300-1000)	950*450	200-300	3	1-1.5	11/15	5000*2750*1800	4
JPW40QT	40	720*720*(300-1500)	1150*680	300-450	4	1.5-2.5	15/20	6100*3200*1950	6.5
JPW40QT-P	40	720*800*(300-1500)	1350*680	300-450	4	2-3	15/20	6600*3200*2100	7
JPW60QT	60	750*850*(300-1600)	1500*700	350-500	4	3-4	22/30	6900*3300*2100	8
JPW60QT-P	60	1100*800*(300-1600)	1600*1050	350-500	4	3-6	30/40	7100*4200*2100	9.5
JPW80QT	80	1100*800*(300-1800)	1650*1050	400-550	4	4-7	37/50	7900*4200*2100	11
JPW80QT-P	80	1100*900*(300-1800)	1800*1050	400-550	4	5-8	37/50	8200*4200*2200	12
JPW100QT	100	1100*900*(300-2000)	1800*1050	450-600	4	6-10	45/60	8400*4300*2400	13.5
JPW100QT-P	100	1100*1100*(300-2000)	2000*1050	450-600	4	7-11	45/60	8800*4300*2400	15
JPW120QT	120	1100*1100*(300-2100)	2000*1050	500-650	5	8-13	52/70	9100*4300*2400	17
JPW120QT-P	120	1100*1250*(300-2100)	2200*1050	500-650	5	9-14	60/80	9500*4300*2600	18
JPW150QT	150	1100*1100*(300-2100)	2200*1050	550-750	5	10-16	85/114	9800*4300*2400	20
JPW150QT-P	150	1100*1250*(300-2100)	2400*1050	550-750	5	12-18	93/124	10200*4300*2600	22
JPW200QT	200	1100*1100*(300-2100)	2400*1050	650-850	5	14-20	101/135	10500*4370*2500	30
JPW200QT-P	200	1100*1250*(300-2100)	2600*1050	650-850	5	15-22	101/135	11000*4370*2700	32
JPW250QT	250	1100*1250*(300-2100)	2800*1050	800-1000	5	16-25	110/147	12000*4468*2700	35

\* 以上参数可根据客户要求定制。The above parameters can be customized according to customer's requirement.



# 02

## 印刷厂排废系统

### Waste Discharge System for Printing Industry

为印刷行业的废纸排废系统提供合理高效的专业设计方案，设备运行稳定，可有效降低粉尘污染，废纸回收打包效率明显提高。解决了印刷行业的胶装联动线、骑订联动线、胶包机、勒口机等设备无人化环保排废的问题。

We manufacture professional and efficient solution of waste paper discharge system for printing industry. The system operates stably, reduces dust pollution, and improves the efficiency of recycling waste paper. It solves the unmanned environmental protection issues of waste discharge equipment such as Adhesive Binding Line, Saddle Stitches Line, Binding Machine, Three-Knife Trimmer etc.



扫码观看视频  
Scan here to watch the video

# 印刷厂排废流程图

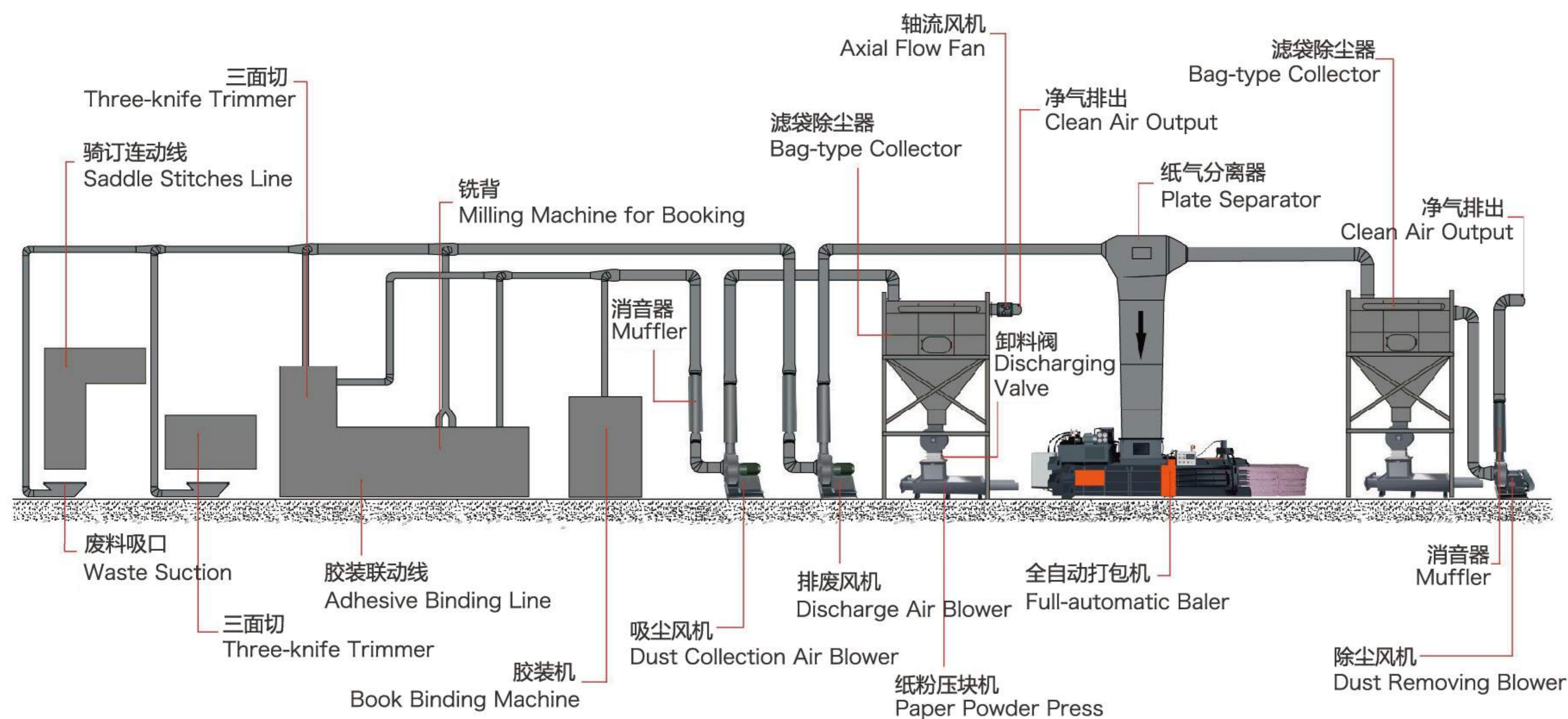
## Flow Chart of Printery Waste Discharge



流程示意说明：

通过排废风机将印刷后道设备的碎纸边、纸条、纸屑吸进风机后通过管道输送到纸气分离器，纸、气分离后碎纸向下落入打包机，含尘气流进入袋式除尘器，粉尘被集中收集处理，净气排入室内或室外。收集后的粉尘通过专用卸料阀落入粉尘压块机设备，压缩成块状物体，方便堆积和运输，避免二次污染，保证车间环境干净。整套系统除尘效率符合国家环保要求。本系统为自动化操作，运行稳定，故障率极低且易于保养，维保成本较低。

The scrap edge, paper strip, and paper scraps from the equipment in the printing track are sucked into the fan through the exhaust fan and sent to the paper gas separator through the pipeline. After the paper and gas are separated, the scrap paper falls down into the baler, the dust-containing air enters the bag type dust collector, the dust is collected and processed centrally, and the net air is discharged into the indoor or outdoor. The collected dust falls into the dust press equipment through the special discharge valve, and is compressed into block-shaped objects, which is convenient for accumulation and transportation, avoiding secondary pollution and ensuring a clean workshop environment. The dust removal efficiency of the whole system meets the national environmental protection requirements. The system is automatic operation, stable operation, low failure rate and easy maintenance, maintenance cost is low.





扫码观看视频  
Scan here to watch the video

# 03

## 瓦楞纸排废系统

### Corrugated Paper Discharge System

流程示意说明：此方案是专为纸箱行业设计的整厂废纸处理系统方案。根据现场情况不同，出具相应适合的定制化方案，其中，瓦线纵切机两侧修边废料，可通过碎纸风机粉碎，再由管道输送到纸气分离器，进入打包机；也可采用切断机切断后，通过输送线进入打包机，大大节省能耗。另外，印刷开槽机、模切机产生的废料由安装在地沟中的输送线输送至碎纸风机，再由管道输送到纸气分离器，进入打包机。或也可通过输送线的设计方案直接送至打包机打包。

This program is designed for the carton industry, the whole plant waste paper treatment system program. According to the different site conditions, we provide the appropriate customized program. The trimming waste on both sides of the tile slitter can be crushed by the paper shredder, and then transported by the pipeline to the paper gas separator and into the baler; It can also be cut off by cutting machine, through the conveyor line into the baler, greatly saving energy consumption.

In addition, the waste generated by the printing slotting machine and the die-cutting machine is transported to the shredding fan by the conveyor line installed in the gutter, and then transported to the paper gas separator by the pipeline and into the baler. It can also be directly sent to the baler through the design of the conveyor line.

# 瓦楞行业整厂排废流程图

## Flow chart of whole plant waste discharge in corrugated industry



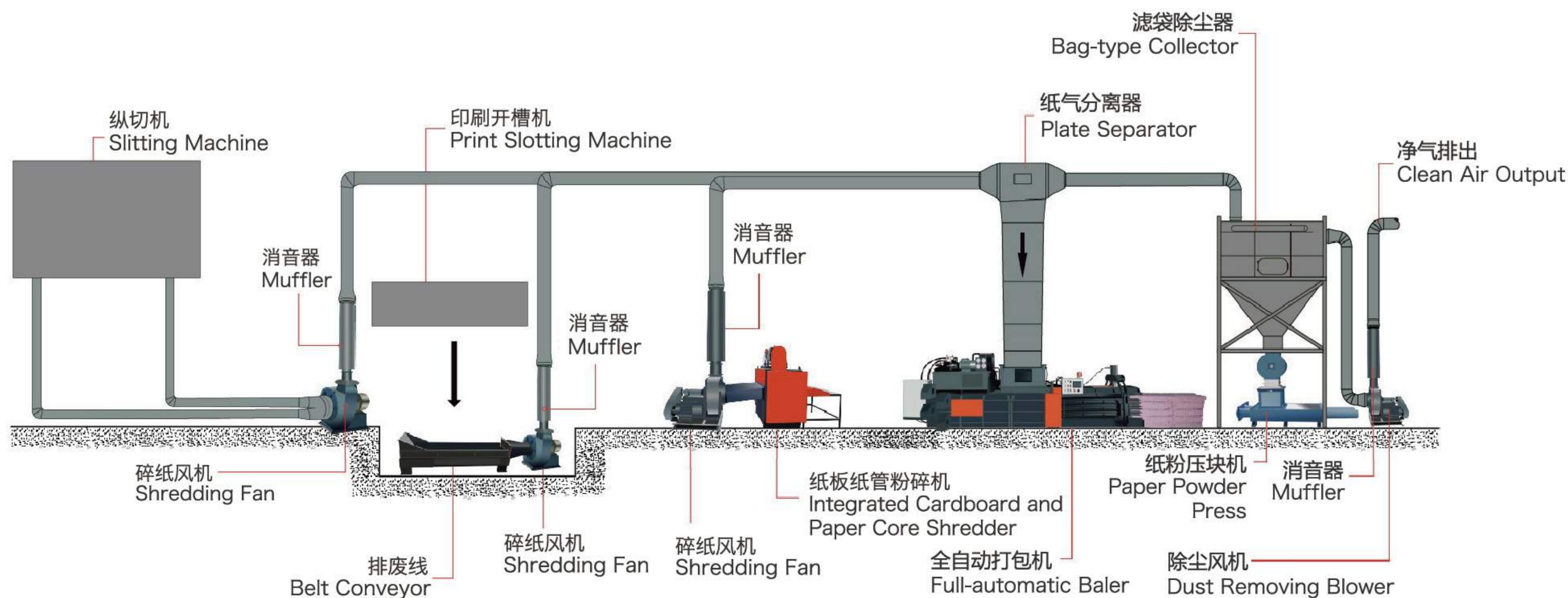
瓦线及印刷机产生的废纸板、剥皮纸、纸管可使用纸板纸管破碎一体机破碎，通过碎纸风机管道输送到纸气分离器，进入打包机。也可破碎后通过输送线输送至打包机。

通过管道输送过程产生的含尘气体通过纸气分离器排出，含尘气体进入滤袋除尘器，除尘效率可达到国家环保要求，也可以根据客户要求选择上排式旋风分离器，加装喷雾装置，进行简易降尘处理。

此套设备在打包机后端可加装包块称重系统，并可接入生管系统，在线统计，从而管理生产成本及废纸量。

The scrap paper board, peeling paper and paper tube produced can be broken by the cardboard and paper tube crushing machine, and be transported to the paper gas separator through the paper shredder pipe and the into the baler. It can also be broken and transported to the baler through the conveyor line.

The dust-containing gas produced by the pipeline transportation process is discharged through the paper gas separator, and the dust-containing gas enters the filter bag dust collector to meet the national environmental protection requirements. And the upper cyclone separator can be selected according to the customer's requirements. The spray device can be installed for simple dust removal treatment. Weighing system can be installed at the end of the set of equipment, and it can be connected with the production system for online statistics, so as to manage the production cost and waste paper amount.





扫码观看视频  
Scan here to watch the video

# 04

## 造纸行业整厂排废系统

Whole Plant Waste Discharge System for Paper Industry

适用：造纸行业的废纸边及报废品的自动化输送，可直接进入碎浆机或切换至打包机打包、储存。

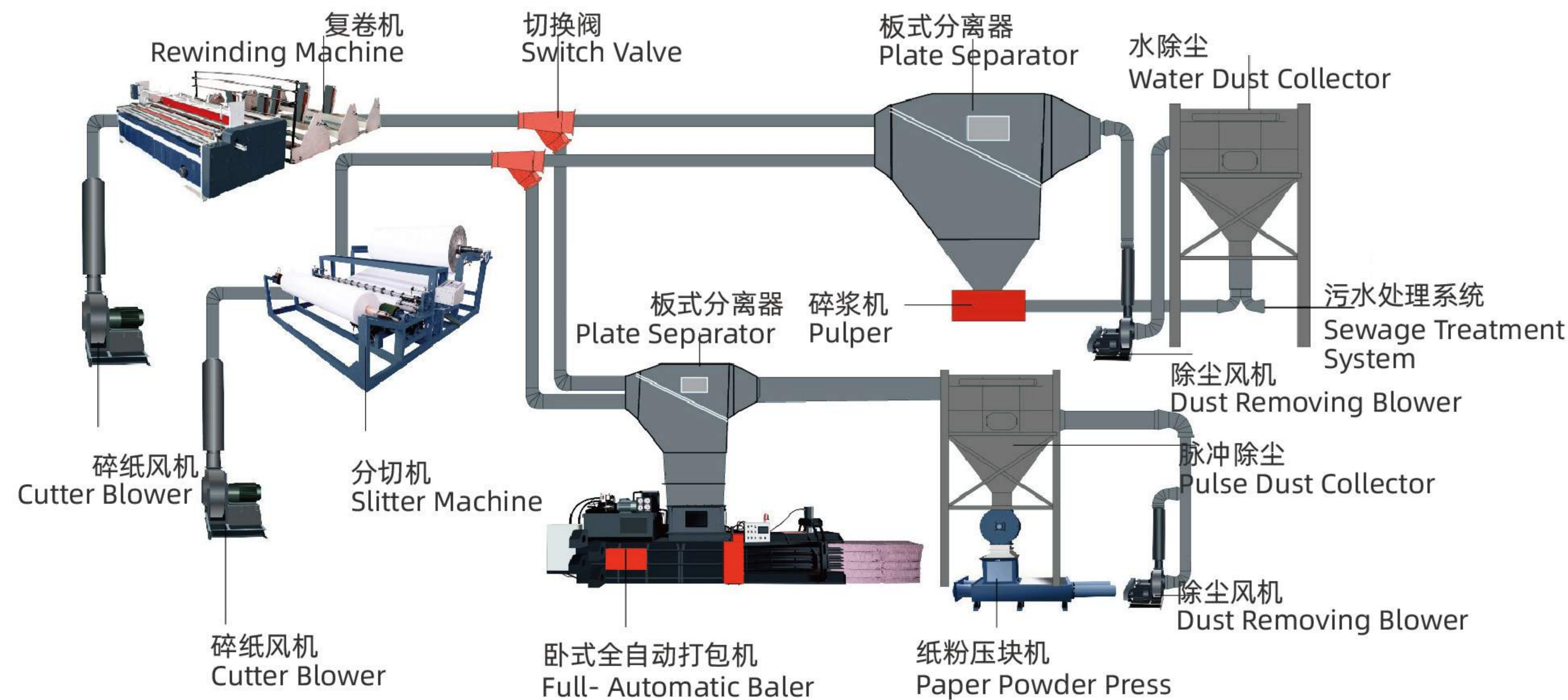
It is suitable for the automatic conveying of waste of paper industry. The waste can be directly transported into the pulper or switched to the baler for storage.

流程示意说明：

造纸行业的修边废纸主要由粉碎风机通过安装在复卷机、切纸机、分切机下的两个吸口将废边吸进风机，经粉碎切断后通过管道输送至分离器，废边料分离后落入打包机集中压缩打包。分离器排出含尘气体通过除尘风机可接入水除尘器或布袋除尘器，将粉尘收集集中处理。水除尘器产生的污水可接入碎浆机或污水处理系统。洗浆池产生的塑料轻渣可通过专业的挤水机设备进行挤压脱水后，进行下一步再利用。而布袋除尘器可采用专用卸料阀接入粉尘压块机，将粉尘进行压块处理。

In the treatment system of trimming, the waste is sucked into the Shredding Fan through two suction holes installed under the Rewinding Machine and Slitting Machine. After being shredded, the waste is transported to the Plate Separator through the pipeline. After separation, the waste falls into the baler for centralized compression and packaging. The dust-containing gas discharged from the separator can be connected to a Water Dust Collector or a Bag Dust Collector through Dust Removing Fan to collect and process the dust. The Water Dust Collector can be connected to the Pulper or Sewage Pipe. The light plastic slag produced by the slurry washing tank can be extruded by extrusion equipment and reused. The Bag Dust Collector can be connected to the Paper Powder Press with a special discharge valve to press the dust into blocks.

## 造纸厂排废流程图 Paper Mill Waste Disposal Flow Chart





扫码观看视频  
Scan here to watch the video

# 05

## 软包印刷行业整厂排废

### Waste Discharge System for Soft Package Printing Industry

本系统适用于利乐包及食品包装的废料自动输送和收集，可大大减少人工成本、仓储成本以及运输成本，并且有效的改善厂房车间的环境。

This system is suitable for the automatic transportation and collection of waste materials of Tetra Pak and food packaging, which can greatly reduce labor costs, storage costs and transportation costs, and effectively improve the environment of the workshop.



本排废系统针对软包行业的分切机、淋膜机等产生修边废料的生产线进行统一集中排废的处理：分切机所产生的修边一般为纸塑复合材料，本套系统实现的是将分切机的修边使用切碎机切碎后通过管道直接输送至废纸打包房，输送风机置于系统线的后端，安置在废纸房内，有效减少车间的噪音。废料通过风机的输送进入分离器设备，分离物料和含尘气体，物料进入分离器下方的全自动打包机，自动压缩打包收集，含尘气体则通过后端除尘器设备进行粉尘过滤收集，除尘效率可达国家环保要求。

淋膜机所产生的修边除纸塑复合材料，也会有纯薄膜PE类的边料，对于纯薄膜的边料收集有两种方式：第一，不切断输送，通过一台文丘里风机，将薄膜边料直接送至设备旁边，通过物料框收集，人工收集送打包房打包；第二种，同样使用切碎机切碎后，输送至废纸房，通过分离器分离后压缩打包或者物料框收集处理，但纯薄膜在管道输送过程中会产生静电，使得物料吸附在分离器上不易掉落，因此在进入分离器的前端需要加装特殊的静电消除装置，以确保整套系统的运行。



The waste discharge system is aimed at the production lines including Slitting Machine, Lamination Machine and other machines of soft packaging industry that produce trimmed waste for unified and centralized waste discharge. The trimmed waste from Slitting Machine is generally paper-plastic composite material. This system realizes that the waste from the Slitting Machine is directly transported to the waste baling room through the pipeline after being shredded by the shredder. The Conveying Fan is placed at the back end of the system and placed in the waste baling room to effectively reduce the noise of the workshop. The waste is transported by the fan into the separator to separate the material and the dusty gas. The material enters the Automatic Baler under the separator and is automatically compressed and packed for collection. The dusty gas is collected by the dust filter equipment at the back end. The dust removal efficiency meets the national environmental protection requirements.

In addition to the paper-plastic composite material produced from the Lamination Machine, there will also be pure film PE scrap edge. For the pure film PE scrap edge collection there are two ways. The first one is that without cutting off the conveying, the film PE scrap edge is directly sent to the equipment through a Venturi Fan, collected through the material frame and after manual collection, it will be sent to the baling room. The other one is that after the same shredding process, the waste is transported to waste paper room, compressed and baled or collected through the material frame for subsequent treatment after separation through the separator. But the pure film will generate static electricity during the pipeline transportation process, making the material adsorbed on the separator and not easy to come off. So at the front end of the separator, a special electrostatic elimination device needs to be installed to ensure the operation of the whole system.



# 双压头压缩打包机

## Twin Ram Compression Baler

广泛应用于印刷、特种纸、薄膜、纤维及无纺布的边角料等材料的压缩打包回收处理。

无人化全自动压缩打包机，压缩、打包自动完成，使用PP带捆扎，降低辅材费用，方便储运，减少人工成本。

双头压缩，密度高，散碎的物料也可套袋使用。

加料口可接风管加分离器送料或输送带上料，也可直接配线使用。

Twin-Ram Compression Baler is used for compression, baling and recycling in printing, special paper, film, fiber and non-woven scrap materials.

It is the unmanned and full-automatic compression baler operating automatic compression and baling. The use of PP tape to bind reduces the cost of auxiliary materials, is convenient for storage and transportation and lowers labor costs.

The twin-ram compression offers high density. And small materials can be bagged.

The feeding hole can be connected to pipeline with separator or connected directly to the end of production line to feed.



### 双压头参数 Twin ram baler parameters

型号 Model	压缩力 Hydraulic Power ( Ton )	包块尺寸 Bale Size ( L*W*H ) mm	加料口尺寸 Feed Opening Size ( L*W ) mm	包块重量 Bale Weight ( kg )	捆包道数 Bale Lines ( PPstrap )	功率/马力 Power ( KW/HP )	机器尺寸 Machine Size ( L*W*H ) mm	机器重量 Machine Weight ( Ton )
JPW20Q	20	500*500*500	700*460	30-70	2-4	7.5/10	3400*3010*2400	2.8
JPW30Q	30	700*700*700	900*660	70-130	3-5	11/15	4250*3120*2600	3.3
JPW40Q	40	800*800*800	1100*760	100-150	3-5	15/20	4750*3380*2900	3.7

\* 以上参数可根据客户要求定制。 The above parameters can be customized according to customer's requirement.



扫码观看视频  
Scan here to watch the video

# 双压头压缩打包机

## Twin Ram Compression Baler

双压头压缩打包机广泛应用于各类纸张、塑胶薄膜、铁罐、铝罐等材质。采用主缸压缩，侧缸推出的原理,可适应各种不同材料。采用进口铁丝捆扎系统，稳定可靠,可设定捆扎线数及间距。专业的人机界面，可根据不同材料设定操作模式。

Double cylinder compression baler is widely used in recycling of paper, plastic film, tin, aluminum cans and many other materials. Main compression cylinder and side pushing cylinder work together holistically, suitable for compressing different types of material. It adopts imported wire tying system with customizable feature of tying setting on space and lines. Professional digital control interface with wide selection of modes for various materials operation available.



### 双压头参数 Twin ram baler parameters

型号 Model	压缩力 Hydraulic Power (Ton)	包块尺寸 Bale Size (L*W*H) mm	加料口尺寸 Feed Opening Size (L*W) mm	处理量 Handling capacity (Ton/hr)	功率/马力 Power (KW/HP)	重量 Weight (Ton)
JPW100Q-Z	60+40	750*500*500	650*460	1-2	15/20	3
JPW150Q-Z	80+70	1000*750*750	1200*720	3.5-5	30/40	12
JPW200Q-Z	120+80	1400*1100*750	1800*1050	8-15	45*2/120	22
JPW250Q-Z	150+100	1700*1500*750	2100*1450	11-18	45*3/180	26

\* 以上参数可根据客户要求定制。 The above parameters can be customized according to customer's requirement.



扫码观看视频  
Scan Here to Watch the Video



扫码观看视频  
Scan here to watch the video

# 06

## 卧式半自动压缩打包机

### Horizontal Semi-Automatic Baler

广泛用于包装、纸箱、印刷、造纸、食品、垃圾回收等行业的压缩打包。采用左右收口方式，通过油缸自动式和人工式收紧与放松，调节方便。左右压紧及推包，包块长度可调节，连续出包，提高工作效率。

Horizontal Semi-Automatic Baler is widely used for packaging industry, carton industry, printing industry, papermaking industry, food industry, garbage recycling industry.

It adopts two-side shrinking method tightening and releasing the bale by cylinder or manually. And it is very easy to adjust.

It compresses and pushes bales from two sides, left and right, and the length of bale can be adjusted. It outputs bale continuously and improves work efficiency.



PLC程序控制，电动按钮控制，操作简单，自带加料检测，自动压缩。

打包长度可设定，且设有捆包提醒装置。

包块尺寸、电压可根据客户的合理要求定制，打包物料不同，包块重量也不同。

三相电压，安全联锁，操作简单，可配风管或输送线送料，效率更高。

The operation is easy with PLC control system and electric buttons control system. Also it has automatic feeding detection and automatic compression.

The bale length can be set and automatic baling reminder device is configured.

Bale size and voltage could be customized according to requirements.

Depending on what kind of the material is, the bale weigh differs.

It has three-phase voltage, safety interlock device and simple operation. And it can connect with air pipeline or conveyor to feed material directly to improve working efficiency.



型号 Model	压缩力 Hydraulic Power ( Ton )	包块尺寸 Bale Size ( W*H*L ) mm	加料口尺寸 Feed Opening Size ( L*W ) mm	包块重量 Bale Weight ( kg )	捆包道数 Bale Lines	出包方式 Out-bale Way	打包能力 Output ( Ton/hr )	功率/马力 Power ( KW/HP )	机器尺寸 Machine Size ( L*W*L ) mm
JPW40F JPW40E	40	720*720*(500-1300)	1000*720	200-400	4	连续推包 continuously push bales	1-2	11/15	4900*1750*1950
JPW60F JPW60E	60	750*850*(500-1600)	1200*750	300-500	4	连续推包 continuously push bales	2-3	15/20	5850*1880*2100
JPW80F JPW80E	80	1100*800*(500-1800)	1500*1100	400-600	4	连续推包 continuously push bales	4-5	22/30	6720*2100*2300
JPW100F JPW100E	100	1100*1100*(500-1800)	1800*1100	700-1000	5	连续推包 continuously push bales	5-7	30/40	7750*2400*2400
JPW120E	120	1100*1200*(500-2000)	2000*1100	800-1050	5	连续推包 continuously push bales	6-8	37/50	8800*2400*2550
JPW150E	150	1100*1200*(500-2100)	2200*1100	900-1300	5	连续推包 continuously push bales	6-8	45/61	9300*2500*2600

\* 以上参数可根据客户要求定制。The above parameters can be customized according to customer's requirement.



扫码观看视频  
Scan here to watch the video

# 07

## 卧式半自动压缩打包机

### Horizontal Semi-Automatic Baler

适用各种卡纸类、塑料类、纤维、海绵、布料等多种常规物料压缩打包；广泛应用于各类工厂、回收处理等行业。

闭口式左右开关门结构，使包块压缩更结实。

特别适合多种物料分类压缩打包的需求客户。

Horizontal Semi-Automatic Baler is suitable for compressing paperboard, plastic, fiber, sponge, cloth, etc. And it is widely used in different types of factories and recycling industries.

The design of closed type left-right door structure is to make the bale more solid.

The design of high-strength bale output door and hydraulic locking door offer safety and convenience.

It is especially suitable for classification, compression and baling of multiple materials.

PLC程序控制，电动按钮操作，自带加料检测，自动压缩。

打包长度可设定，且设有捆包提醒装置。

每道铁丝或捆包绳只需人工穿一次，即可完成捆扎，节省人工。

包块尺寸、电压可根据客户的合理要求定制，根据物料不同，包块重量也不同。

三相电压，安全联锁，操作简单，可配风管或输送线送料，效率更高。

The operation is easy with PLC control system and electric buttons control system. Also it has automatic feeding detection and automatic compression.

The bale length can be set and automatic baling reminder device is configured.

Each wire or baling rope only needs to be manually worn once to finish bundling and save labor.

Bale size and voltage could be customized according to requirements.

Depending on what kind of the material is, the bale weigh differs.

It has three-phase voltage, safety interlock device and simple operation. And it can connect with air pipeline or conveyor to feed material directly to improve working efficiency.



型号 Model	压缩力 Hydraulic Power ( Ton )	包块尺寸 Bale Size ( W*H*L ) mm	加料口尺寸 Feed Opening Size ( L*W ) mm	包块重量 Bale Weight ( kg )	捆包道数 Bale Lines	出包方式 Out-bale Way	功率/马力 Power ( KW/HP )	机器尺寸 Machine Size ( L*W*H ) mm
JPW40BC	40	720*720*(300-1000)	1000*720	250-350	4	一次性出包 one-off bale out	15/20	6500*1200*1900
JPW60BC	60	750*850*(300-1100)	1200*750	350-500	4	一次性出包 one-off bale out	18.5/25	7200*1310*2040
JPW80BC	80	1100*800*(300-1100)	1350*1100	500-600	4	一次性出包 one-off bale out	22/30	8100*1550*2300
JPW100BC	100	1100*1100*(300-1100)	1500*1100	600-800	5	一次性出包 one-off bale out	30/40	8300*1600*2400
JPW120BC	120	1100*1200*(300-1200)	1600*1100	800-1000	5	一次性出包 one-off bale out	37/50	8500*1600*2400
JPW150BC	150	1100*1200*(300-1300)	1800*1100	1000-1200	5	一次性出包 one-off bale out	45/60	8800*1850*2550

\* 以上参数可根据客户要求定制。 The above parameters can be customized according to customer's requirement.



扫码观看视频  
Scan here to watch the video

# 08

## 卧式半自动压缩打包机 Horizontal Semi-Automatic Baler

适用于纤维、海绵、卡纸类、PET瓶、硬质塑料（如电脑外壳、保险杠）等回收压缩打包。特别适合多种物料分类压缩打包的需求客户。

This model is suitable for fiber, sponge, cardboard, PET bottles, hard plastics, such as computer shell and bumper. It is especially suitable for customers who have multiple materials to classify, compress and bale.



闭口式液压上下提升开关门结构，一次性出包，出包后无需及时移包。高强度出包门，双缸自动开关门装置，安全可靠。  
打包长度可设定，且设有捆包提醒装置。  
预埋式设计，每道铁丝或捆包绳只需人工穿一次，即可完成捆扎，节省人工。

The design of closed type hydraulic up-down door structure outputs bale at once and there's no need to move bales. The design of high-strength bale output door and double-cylinder automatic opening device offer safety. The bale length can be set and automatic baling reminder device is configured. With pre-installed strapping design, each wire or baling rope only needs to be manually worn once to finish bundling and save labor.

型号 Model	压缩力 Hydraulic Power (Ton)	包块尺寸 Bale Size (W*H*L) mm	加料口尺寸 Feed Opening Size (L*W) mm	包块重量 Bale Weight (KG)	捆包道数 Bale Lines	出包方式 Bale Output Type	功率/马力 Power (KW/HP)	机器尺寸 Machine Size (L*W*H) mm	机器重量 Machine Weight (Ton)
JPW40BL	40	720*720*(300-1000)	1000*720	250-350	4	一次性出包 Automatic Output	15/20	5500*1150*1900	5
JPW60BL	60	750*850*(300-1100)	1200*750	350-500	4	一次性出包 Automatic Output	18.5/25	6490*1370*2060	6.8
JPW80BL	80	1100*800*(300-1100)	1350*1100	500-600	4	一次性出包 Automatic Output	22/30	6900*1870*2100	8.4
JPW100BL	100	1100*1100*(300-1200)	1500*1100	600-800	5	一次性出包 Automatic Output	30/40	7600*1650*2500	9.7
JPW120BL	120	1100*1250*(300-1200)	1600*1100	800-1000	5	一次性出包 Automatic Output	37/50	7600*1750*2500	12.5
JPW150BL	150	1100*1250*(300-1300)	1800*1100	1000-1200	5	一次性出包 Automatic Output	45/60	8800*1850*2650	14

\* 以上参数可根据客户要求定制。The above parameters can be customized to customer's requirement.

# 立式压缩打包机

## Vertical Compression Baler

简易操作机型，五种压力型号选择，适用范围广泛，通常适用各种常规回收物料，性价比高，应用于中小企业及废品回收站等行业。

本机采用液压传动，具有独立的压板平衡装置。采用手动阀工作方式，操作方便简单。独立式填料口及自动翻包装置，安全可靠。

Vertical Compression Baler has easy operation and provides five levels of hydraulic power. It has a wide range of application. Usually, it is used for recycling a variety of conventional materials and has great cost performance and is suitable for small and medium-sized company and waste recycling industries.

This machine adopts hydraulic transmission and has independent plate balance device. It is controlled by manual valve offering easy operation. The independent feeding opening and automatic bale output device are safe and reliable.



型号 Model	压缩力 Hydraulic Power ( Ton )	包块尺寸 Bale Size ( L*W*H ) mm	加料口尺寸 Feed Opening Size ( L*H ) mm	打包能力 Output ( Bales/hr )	包块重量 Bale Weight ( kg )	功率/马力 Power ( KW/HP )	机器尺寸 Machine Size ( L*W*H ) mm	机器重量 Machine Weight ( kg )
JP-C15A	15	800*600*(400-800)	800*450	4-7	50-120	3/4	1070*850*2850	800
JP-C20A	20	1000*700*(400-800)	1000*500	4-7	90-160	4/5.5	1400*950*3000	850
JP-C30A	30	1100*700*(450-900)	1100*500	4-7	120-200	5.5/7.5	1550*950*3050	1340
JP-C40A	40	1100*750*(450-900)	1100*500	4-7	200-250	5.5/7.5	1550*1100*3250	1500
JP-C50A	50	1100*750*(450-900)	1100*500	4-6	250-350	7.5/10	1550*1100*3250	1700

\* 以上参数可根据客户要求定制。The above parameters can be customized according to customer's requirement.



扫码观看视频  
Scan here to watch the video

# 立式压缩打包机

## Vertical Baling Machine



扫码观看视频  
Scan here to watch the video

小型立式机型，适用范围较广，可用于废纸、纸箱纸盒、塑料膜及PET瓶、皮革、部分纤维等物料回收打包。

采用一体式设计，按钮集中控制，安全联锁及自动出包装置，操作方便简单。方便快捷开门，安全可靠。优质的零配件，保证设备的使用寿命。

The Small-Sized Compression Baler is widely used for baling and recycling of waste paper, cardboard boxes, plastic film, PET bottles, leather, some fiber and other materials.

It adopts integrated design with centralized electric button control, safety interlock and automatic bale output. The door is easy to open, safe and reliable. High quality components are equipped to ensure the working life of machine.



型号 Model	压缩力 Hydraulic Power ( Ton )	包块尺寸 Bale Size ( L*W*H ) mm	加料口尺寸 Feed Opening Size ( L*H ) mm	打包能力 Output ( Bales/hr )	包块重量 Bale Weight ( kg )	功率/马力 Power ( KW/HP )	机器尺寸 Machine Size ( L*W*H ) mm	机器重量 Machine Weight ( kg )
JP8060T15	15	800*600*(400-800)	800*450	4-7	50-120	3/4	1280*900*2870	850
JP8060T20	20	800*600*(400-800)	800*450	4-7	80-120	4/5.5	1280*900*3020	1050
JP8060T30	30	800*600*(400-800)	800*450	4-7	100-150	5.5/7.5	1280*900*3050	1200

\* 以上参数可根据客户要求定制。The above parameters can be customized to customer's requirement.

# 立式压缩打包机

## Vertical Baling Machine

适用于废纸、塑料、纸盒纸箱、废物等常规物料的回收压缩打包，型号选择性较强；适合各种中外企业、物流及超市行业使用。

U型平衡装置，避免因加料不匀而发生意外。投料口采用上下移动式，自动开门，方便投料。

安全联锁，自带翻包系统。加料腔采用防止物料反弹装置，大大节省加料时间。

优质的零配件，保证设备的使用寿命。

Vertical Compression Baler is used to compress and bale waste paper, plastic, cardboard, boxes and other conventional materials, and there are a variety of models for selection. This type of baler is suitable for domestic and foreign enterprise, logistics and supermarket.

The u-shaped balance device prevents accident from uneven material feeding.

The feeding opening uses up-down moving door which can open automatically, and it is very convenient to feed material.

It has safety interlock and is featured with automatic bale outputting.

The feeding chamber adopts special device to prevent material rebound saving feeding time greatly.

High quality components are equipped to ensure the working life of machine.



型号 Model	压缩力 Hydraulic Power ( Ton )	包块尺寸 Bale Size ( L*W*H ) mm	加料口尺寸 Feed Opening Size ( L*H ) mm	打包能力 Output ( Bales/hr )	包块重量 Bale Weight ( kg )	功率/马力 Power ( KW/HP )	机器尺寸 Machine Size ( L*W*H ) mm	机器重量 Machine Weight ( kg )
JPA1070T30M	30	1100*700*(650-900)	1050*500	3-6	150-250	5.5/7.5	1580*1100*3280	1200
JPA1075T40M	40	1100*750*(700-1000)	1050*500	3-5	200-350	5.5/7.5	1580*1150*3450	1700
JPA5076T50M	50	1500*760*(700-1000)	1450*600	3-5	350-500	7.5/10	2000*1180*3650	2300

\* 以上参数可根据客户要求定制。 The above parameters can be customized according to customer's requirement.



扫码观看视频  
Scan here to watch the video

# 立式双缸压缩打包机

## Vertical Double-cylinder Baling Machine

适用范围广泛，双缸压缩，适合各种废纸类、塑料类等物料的压缩打包，广泛应用于工厂及回收行业。

此机采用液压传动，双缸运行，平稳有力。

采用按钮集中控制，上置式液压系统设计，节省空间。

双液压缸式加压设计，确保机器压缩时的受力平衡。

Vertical Double-Cylinder Baler has wide application. With double cylinders, it is suitable for compressing and baling waste paper, soft and rigid plastic and other materials. And it is widely used in factories and recycling industry.

The type of machine uses hydraulic transmission. With double-cylinder, its operation is durable and powerful.

It uses centralized button control and upper hydraulic system saving space.

The design of double hydraulic cylinders is to ensure the force balance during compression.



型号 Model	压缩力 Hydraulic Power (Ton)	包块尺寸 Bale Size (L*W*H) mm	加料口尺寸 Feed Opening Size (L*H) mm	压缩腔尺寸 Chamber Size (L*W*H) mm	打包能力 Output (Bales/hr)	功率/马力 Power (KW/HP)	机器尺寸 Machine Size (L*W*H) mm	机器重量 Machine Weight (kg)
JPA1070T40	40	1100*700*(500-900)	1100*500	1100*700*1450	4-7	5.5/7.5	1800*1100*3150	1800
JPA1070T60	60	1100*700*(500-900)	1100*500	1100*700*1450	4-7	7.5/10	1800*1100*3250	2200
JPA1075T80	80	1100*750*(500-900)	1100*500	1100*750*1500	4-6	11/15	1800*1250*3400	2600
JPA1075T100	100	1100*750*(500-900)	1100*500	1100*750*1500	4-6	15/20	1800*1250*3500	3200
JPA1075T150	150	1100*750*(500-1000)	1100*500	1100*750*1600	4-6	22/30	1900*1400*3700	4500

\* 以上参数可根据客户要求定制。The above parameters can be customized according to customer's requirement.



扫码观看视频  
Scan here to watch the video

# 纸板（纸管）破碎机

## Cardboard & Paper Tube Shredder

适用于瓦楞纸板、模切机产生的尺寸较大的瓦楞纸板和纸管的破碎回收，经破碎后，由风机吸入或输送线进入打包机压缩打包。

Cardboard & Paper Tube Shredder is suitable for the shredding and recycling of corrugated cardboard and paper tube produced by corrugating machine and Die Cutting Machine. After shredding, the waste will be sucked by fan or delivered by conveyor to baler machine to press and pack.

■ 纸板破碎机 / Cardboard breaker



■ 纸管破碎机 / Paper tube breaker



型号 Model	纸板加料口尺寸 Cardboard Feed Opening Size (L*H) mm	纸管入料直径 Feeding Diameter Of Paper Tube	功率/马力 Power/Horsepower (KW/HP)	处理量 Processing Capacity (Kg)	机器尺寸 Machine Size (L*W*H)mm
JP1000YD	1000*200	≤ φ130	11/15	600-800kg/h	1630*980*1980
JP1500YD	1500*200	≤ φ130	15/20	1000-1600kg/h	2130*980*1980
JP2000YD	2000*200	≤ φ130	18.5/25	1200-1800kg/h	2630*980*1980
JP130ZG	/	≤ φ130	15/20	200-300kg/h	1390*1100*1000
JP180ZG	/	≤ φ180	15/20	300-400kg/h	1390*1100*1000

\* 以上参数可根据客户要求定制。The above parameters can be customized to customer's requirement.

# 双轴粉碎机

## Double-Shaft Shredder

适用书本，人工清废后较厚的废纸，将比较难压缩打包的物料进行粉碎，再进入打包机压缩打包，具有粉碎能力强，产量高，噪音低等优点。

Double-Shaft Shredder is suitable for books, the thick waste paper after manual cleaning and the materials that are difficult to compress and bale. It shreds them and then the waste enters the baler to get compressed and baled. This baler has the advantages of strong shredding ability, high output and low noise.



型号 Model	功率 Power (KW/HP)	刀片宽度 Blade Width	切刀数量 Blade Quantity	刀的材质 Blade Materials	进料口尺寸 Feeding Size	粉碎腔尺寸 Shredding Chamber Dimension	粉碎后物料宽度 (长度可定制) Output Width (Customizable Length)	产能(吨) Capacity(Ton)
JP-D30	30	50	12	Cr12MoV	1200X550	620X720	50	0.3-0.5
JP-DS37	37	50	20	Cr12MoV	1500X750	1020X720	50	0.8-1.5
JP-DS45	45	30/50	32/20	Cr12MoV	1500X750	1020X720	30/50	1.5-2.3
JP-DS55	55	30/50	36/22	Cr12MoV	1500X750	1120X720	30/50	2-3
JP-DS60S	30+30	50	40/24	Cr12MoV	1650X750	1220X720	50	2.5-3.5
JP-DS90S	45+45	30/50	42/26	Cr12MoV	1750X750	1320X720	30/50	3-4
JP-DS110S	55+55	30/50	46/28	Cr12MoV	1800X750	1420X720	30/50	3.5-5

\* 以上参数可根据客户要求定制。The above parameters can be customized to customer's requirement.

# 除尘系统

## Dust collector system

此除尘系统广泛应用于印刷、包装、造纸等在废料输送过程中产生粉尘的行业。除尘系统可将粉尘自动收集并压缩成块，避免二次污染及方便储运。还可以根据安监要求，加装一系列防爆装置，如：无焰卸爆、自动灭火、火花探测、压差报警等等，做到完全符合国家环保安监的要求。

The system is widely used in printing, packaging, papermaking and other industries that generate dust during waste transportation. The dust collector system can automatically collect and compress the dust into blocks to avoid secondary pollution and facilitate storage and transportation. A series of explosion-proof devices such as flameless explosion discharge, automatic fire extinguishment, spark detection and pressure difference alarm can be installed according to the safety supervision requirements so as to meet the requirements of the national environmental protection safety supervision.



无焰卸爆



火花探测



压差报警

# 脉冲布袋除尘器

## Pulse Jet Dust Collector

脉冲布袋除尘器，通过纳米三防布袋过滤风量中的粉尘，再通过脉冲阀振动抖落粉尘收集。

同时配套自动风量平衡系统，有效控制风量的平衡，并自动调节使除尘系统始终处于微负压状态，以此达到最佳的除尘效果。一般印刷厂、瓦楞包装行业基本采用此干式除尘的方式。

Pulse Jet Dust Collector filters the dust in the air volume through the nano three-proof bag, and then shakes off the dust through the pulse valve to collect it. At the same time, it is equipped with an automatic air volume balance system which can effectively control the balance of the air volume and automatically adjust the dust removal system to always be in a slight negative pressure state, so as to achieve the best dust removal effect. Printing factories and corrugated packaging industries usually use this dry dust collector.



# 纸粉压块机

## Paper Powder Press

专为纸行业生产的纸粉设计的机型，速度快，安全可靠；纸粉从除尘器落入压块机中，自动进行压块，无需人员操作，经压块后，方便堆放及运输处理。

Paper Powder Press is special designed for the paper power treatment in paper industry. It is safe, reliable and with high speed. The paper powder drops down to the Paper Powder Press from dust collector. The machine will compress automatically and there's no need for any manual operation. The Final blocks make the storage and transportation much more convenient.

型号 Model	名称 Name	压缩力 Hydraulic Power ( Ton )	圆形截面 The Cross Section Area of Roundness Bale ( mm )	处理能力 Capacity ( kg/hr )	压缩时间 Compressing Time ( Seconds )	功率/马力 Power ( KW/HP )
JPW-AP20	小型单头压块机 Small Single Cylinder Briquetting Machine	20	φ80	20-40	20	5.5/7.5
JPW-AK60	单头压块机 Single Cylinder Briquetting Machine	60	φ200	30-50	30	11/15
JPW-AK120	双头压块机 Double Cylinder Briquetting Machine	2*60	2*φ200	60-100	30	22/30

\* 以上参数可根据客户要求定制。The above parameters can be customized to customer's requirement.



# 劈纸机

## Paper roll Cutting Machine

适用造纸厂的纸卷进行分切；根据用户要求可选自动及全自动机型，全自动机型可自动送料及自动切断和出料过程；可加装安全罩及安全网等保护装置。

Paper roll Cutting Machine is used to cut paper rolls in paper mills. According to customers' requirements, there are automatic and full-automatic models to choose. The full-automatic one can realize automatic feeding, cutting and discharging. Protection devices such as safety shell and safety net can be added to the machine.

型号 Model	有效宽度 Effective Width ( mm )	切割行程 Cutting Stroke ( mm )	压力 Hydraulic Power ( Ton )	单次循环周期 Cycle Time ( s )	功率/马力 Power ( KW/HP )	机器尺寸 Machine Size ( L*W*H )	重量 Weight ( Kg )
JP-S100B	1000	1000	100	20-30	11/15	2600*650*3500	2600
JP-S160B	1500	1500	160	40-50	22/30	3400*800*3800	3500

\* 以上参数可根据客户要求定制。The above parameters can be customized to customer's requirement.



# 链板输送线

## Chain Plate Conveyor

机架材质为全钢板结构，坚固耐用。可做地基预埋地坑基础，将输送线中水平部分置于地坑中，在加料时，可连续化将物料直接推入地坑中，高效输送物料。可加装逆止器及自动润滑装置，便于后期维护，减少故障率。

The conveyor is made of all steel construction which is strong and durable. The horizontal part of conveyor can be placed in pre-buried pit. It pushes the material directly to the pit continuously during feeding reaching high efficiency. Backstop and automatic lubrication device can be installed to facilitate maintenance and reduce the failure rate.

输送线 ( Conveyor Type )	材质 ( Material )	传动方式 ( Driving Model )	输送速度 ( Conveying Speed )	规格尺寸 ( Specification Size )
链板输送线 Chain Palte Conveyor	钢板 Steel Plate	链条传动 Chain Drive	0-20m/分 ( min )	任意 Any Size

\* 以上参数可根据客户要求定制。The above parameters can be customized to customer's requirement.



# 皮带输送线

## Belt Conveyor

传送带材质为定制的四层复合PVC材质，耐磨。PVC皮带可加装间隔挡板，使物料不易滑落，上料速度更快。

This type of conveyor is made of four-layer composite PVC material and very wearproof. The PVC belt can be added with interval baffle to make the material not to fall back and the speed of feeding material quick.

输送线 ( Conveyor Type )	材质 ( Material )	传动方式 ( Driving Model )	输送速度 ( Conveying Speed )	规格尺寸 ( Specification Size )
皮带输送线 Belt Conveyor	PVC	滚筒传动 Roller Drive	0-15m/分 ( min )	任意 Any Size

\* 以上参数可根据客户要求定制。The above parameters can be customized to customer's requirement.



## 板式分离器 *Plate Separator*



型号 Model	JPBSFL-1000	JPBSFL-1500	JPBSFL-2000	JPBSFL-2500	JPBSFL-3000
长度 Length	1000mm	1500mm	2000mm	2500mm	3000mm
排风方式 Air Exhausting Way	侧排风 Side Exhausting				

## 捆扎绳 *Packaging Rope*



型号 Model	规格 Specification	颜色 Color	材质 Materials
捆扎绳 Packaging Rope	Φ3-4mm	金银色 Gold-silver Color	电化铝 Electrochemical Aluminum
	Φ5-6mm		
	Φ7-8mm		

## 旋风分离器 *Cyclone Separator*



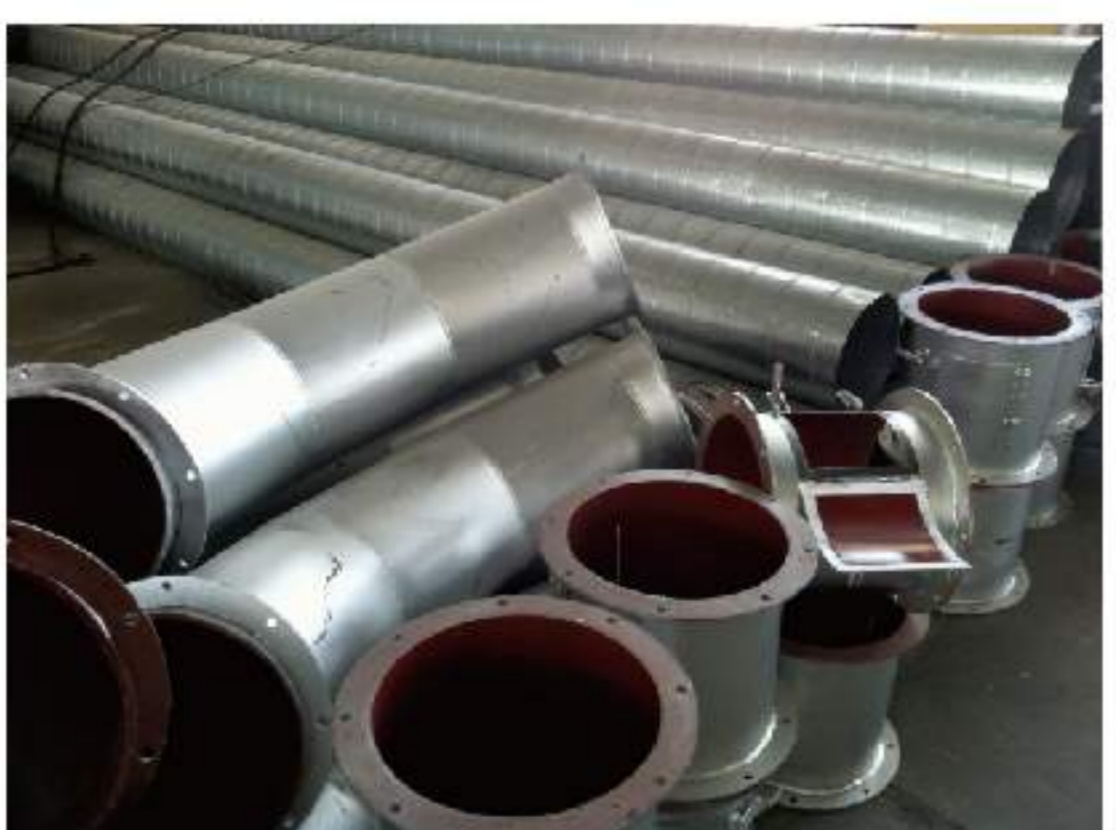
型号 Model	JPZQFL-1500	JPZQFL-1800	JPZQFL-2000	JPZQFL-2200	JPZQFL-2500
直径 Diameter	1500mm	1800mm	2000mm	2200mm	2500mm
排风方式 Air Exhausting Way	上排风 Upper Exhausting				

## 小盘铁丝 *Small Roll Iron Wire*



型号 Model	材质 Materials	铁丝直径 Wire Diameter	规格尺寸 Specification Size	每卷重量 Weight Per Roll
10#	Q45	Φ3.5mm	Φ160*Φ330mm	50Kg
12#	Q45	Φ2.8mm	Φ160*Φ330mm	50Kg
14#	Q45	Φ2.2mm	Φ160*Φ330mm	50Kg

## 管道/弯头/速开检查口 *Pipeline/Bend/Quick-open Inspection Window*



规格 Specification	Φ100-Φ900mm
材质 Materials	PVC、焊接管(Welded pipe)、螺旋管等(Spirel pipe etc) 管道尺寸根据设计要求选型。 The size of the pipe can be chosen according to system design.

## 大盘铁丝 *Big Roll Iron Wire*



型号 Model	材质 Materials	铁丝直径 Wire Diameter	规格尺寸 Specification Size	每卷重量 Weight Per Roll
8#	Q45	Φ4.0mm	Φ900*Φ1000mm	200-300Kg
10#	Q45	Φ3.5mm	Φ900*Φ1000mm	200-300Kg
12#	Q45	Φ2.8mm	Φ900*Φ1000mm	200-300Kg
14#	Q45	Φ2.2mm	Φ900*Φ1000mm	200-300Kg

## 直连式碎纸风机 **A-Type Shredding Fan**



型号 Model	风压 Air Pressure (Pa)	风量 Air Volume (m³/h)	转速 Rotation Speed (r/min)	功率 Power (KW)	进风管直径 The Diameter of Air Inlet Pipe (mm)		出风管直径 The Diameter of Air Outlet Pipe (mm)
JP-4.5A-5.5KW	2530-3126	1879-3856	2900	5.5	Φ200	2-Φ150	Φ200
JP-4.8A-7.5KW	2714-3558	2183-4150	2900	7.5	Φ200	2-Φ150	Φ200
JP-4.9A-11KW	2828-3708	2627-4994	2900	11	Φ220	2-Φ150	Φ220
JP-5.2A-15KW	3185-4175	3140-5968	2900	15	Φ250	2-Φ150	Φ250
JP-5.35A-18.5KW	3372-4420	3420-6500	2900	18.5	Φ250	2-Φ180	Φ250
JP-5.6A-22KW	3694-4842	3922-7455	2900	22	Φ250	2-Φ180	Φ300

## 皮带式碎纸风机 **C-Type Shredding Fan**



型号 Model	风压 Air Pressure (Pa)	风量 Air Volume (m³/h)	转速 Rotation Speed (r/min)	功率 Power (KW)	进风管直径 The Diameter of Air Inlet Pipe (mm)		出风管直径 The Diameter of Air Outlet Pipe (mm)
JP-6.85CG-18.5KW	2374-3110	4704-8939	1900	18.5	Φ250	Φ250	Φ250
JP-6.85CG-22KW	2900-3800	5200-9880	2100	22	Φ250	Φ300	Φ300
JP-6.85CG-30KW	3478-4558	5695-10821	2300	30	Φ300	Φ300	Φ300
JP-6.85CG-37KW	3947-5172	6066-11526	2500	37	Φ300	Φ350	Φ350
JP-9CG-45KW	4098-5368	6870-13057	1900	45	Φ350	Φ350	Φ350

## 滤筒除尘器 **Filter Drum Type Dust Collector**



型号 Model	滤筒数量 Filtering Drum Quantity	滤筒尺寸 Filter Cylinder Size (直径dia) mm	风机功率/马力 Air Blower Power/Horse (KW/HP)	处理风量 Air Capacity (m³/h)
JP-FL4	4	Φ300	5.5/7.5	3000-5500
JP-FL8	8	Φ300	7.5/10	5700-8500
JP-FL16	16	Φ300	15/20	9000-15000

## 滤板式除尘器 **Filter Plate Type Dust Collector**



型号 Model	滤板数量 Filter Plate Quantity	滤板尺寸 Filter Plate Size (直径dia) mm	电机功率/马力 Motor Power/Horse (KW/HP)	处理风量 Air Capacity (m³/h)
JP-FP16	16	Φ130*1250	5.5/7.5	6000-8000
JP-FP32	32	Φ130*1500	11/15	11000-15000
JP-FP48	48	Φ140*1500	15/20	15000-20000
JP-FP72	72	Φ150*2000	22/30	25000-30000
JP-FP96	96	Φ150*2500	37/45	35000-45000

## 纸箱破碎机 **Carton Shredder**



型号 Model	加料口尺寸 Feed Opening Size (L*H) mm	破碎能力 Crushing Capacity (kg/hr)	功率/马力 Power (KW/HP)	纸箱尺寸 Carton Size (L*W*H) mm
小型 Mini model	1200*750	700-1200	7/8.75	≤800*500*500
中型 Medium model	1500*1000	1200-2000	10/12.5	≤1200*800*800
大型 Big model	2400*1500	2000-3000	15/20	≤2000*1200*1000

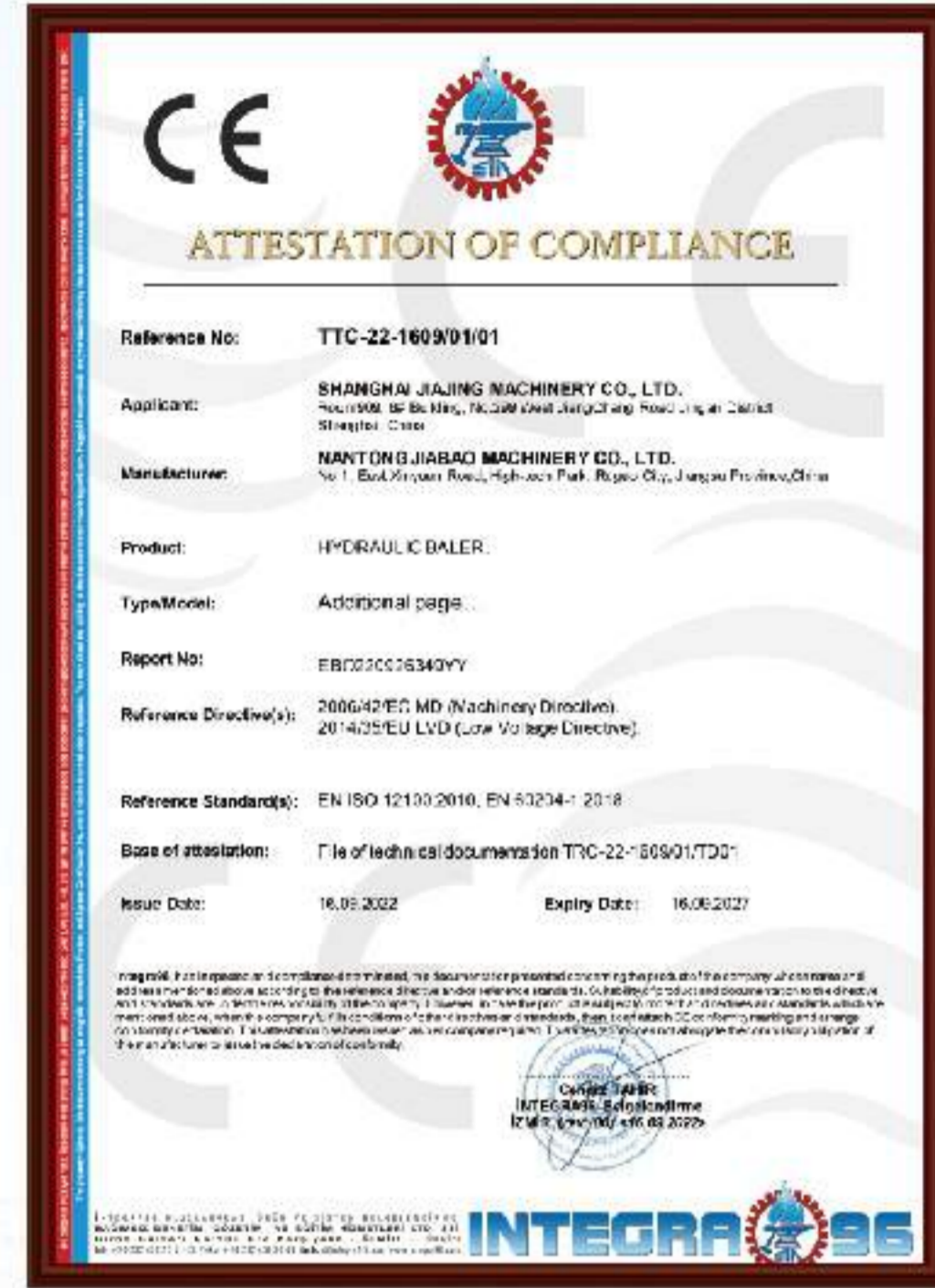
\* 以上参数可根据客户要求定制。The above parameters can be customized to customer's requirement.

技术  
Technology

品质  
Quality

服务  
Service

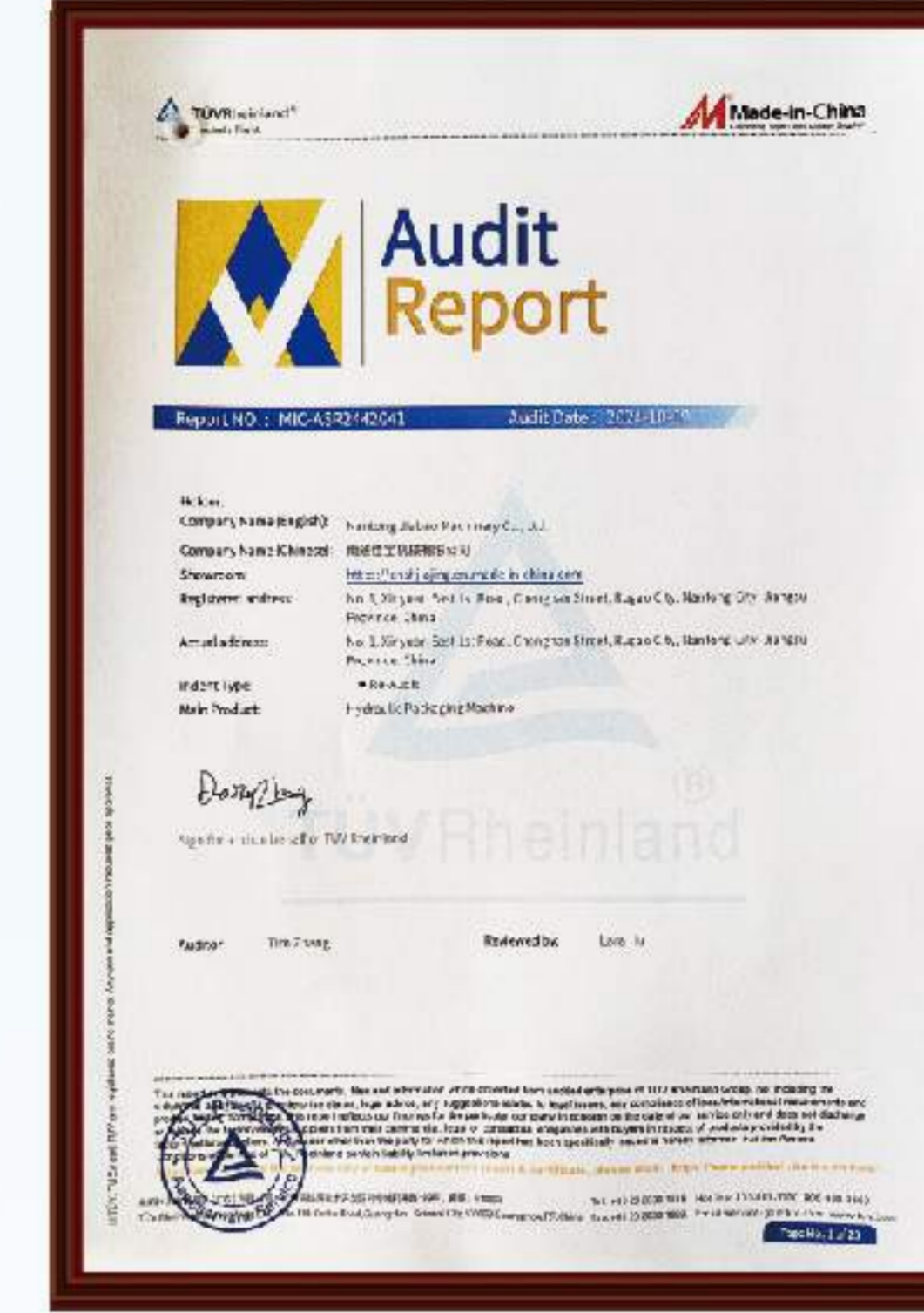
# CERTIFICATE 认证证书



获得欧盟“CE安全体系认证”  
CE Safety System Certificate



获“职业健康安全管理体系”认证  
Obtained the "Occupational Health and Safety Management System" certification



获“TUV”认证  
“TUV” Certificate



荣获“高新技术企业”证书、“江苏省工程技术研究中心”认定  
Won the "High-tech Enterprise" certificate and the "Jiangsu Provincial Engineering Technology Research Center" certification



获“专精特新”证书  
Obtained the Certificate of "Specialization and Special New"



通过了“ISO 9001: 2015质量管理体系认证”  
“ISO 14001: 2015环境管理体系认证”  
Passed ISO 9001-2015 QMSC  
Passed ISO 14001-2015 EMSC





南通佳宝公众号

机身可选颜色Optional color of the machine frame: ●●●●●● 警示色protection plate warning color: ○●

**南通佳宝机械有限公司 NanTong JiaBao Machinery Co.,Ltd**

公司地址: 中国上海静安区江场西路299号6号楼9层

ADD: 9th Floor,# 6 Building ,Lane 299,West JiangChang Road,Shanghai,China.

工厂地址: 江苏省如皋市高新区新源东一路1号

Factory: No.1, East Xinyuan Road, High-tech Park, Rugao, Jiangsu, China

电话: 021-68563495 61400509

Tel: 0086 21 61400508

售后服务: 021-68564313

After-sale Service: 0086 21 68564313

传真: 021-58338367

Fax: 0086 21 58338367

网址: www.shjjajing.com www.csj-baler.com

Web: https://en.shjjajing.com https://en.csj-baler.com

E-mail: jjajing@shjjajing.com

E-mail: jjajing@shjjajing.com